



# Lewisham Main Grants

2026-2029 Programme

# Consultation - Overview



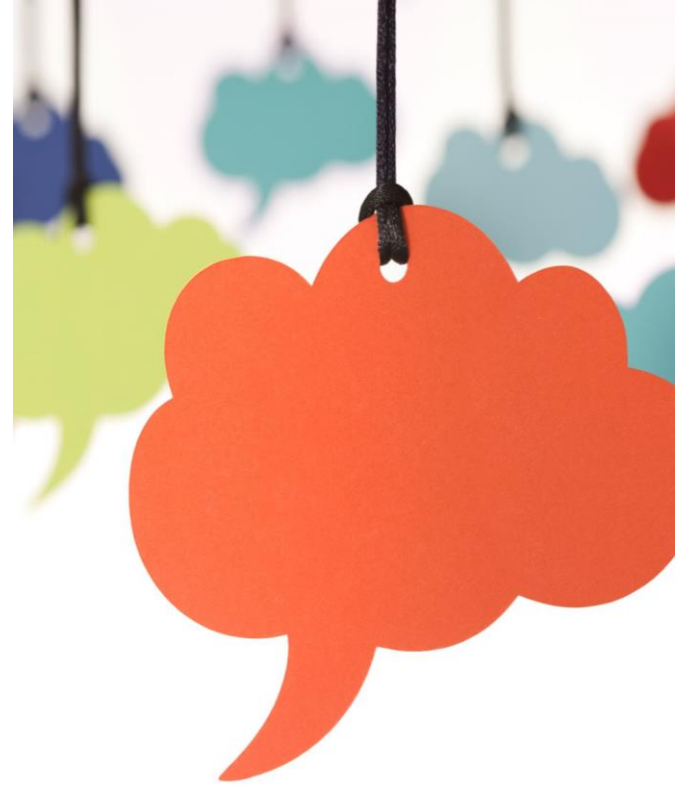
The 2026–29 Main Grants Programme was shaped by consultation with the voluntary and community sector (VCS) and the wider public.



Consultation focused on adapting the programme to reduced funding while strengthening infrastructure and capacity building.

# Key themes from the consultation

- Strong support for neighbourhood-focused delivery and borough-wide infrastructure
- Emphasis on supporting equalities groups, digital inclusion, and arts and sports organisations
- Recognition of the need for transitional support for current grant holders



# Outcomes of the consultation



Introduction of a place-based neighbourhood model with £900,000 per annum allocated across four areas.



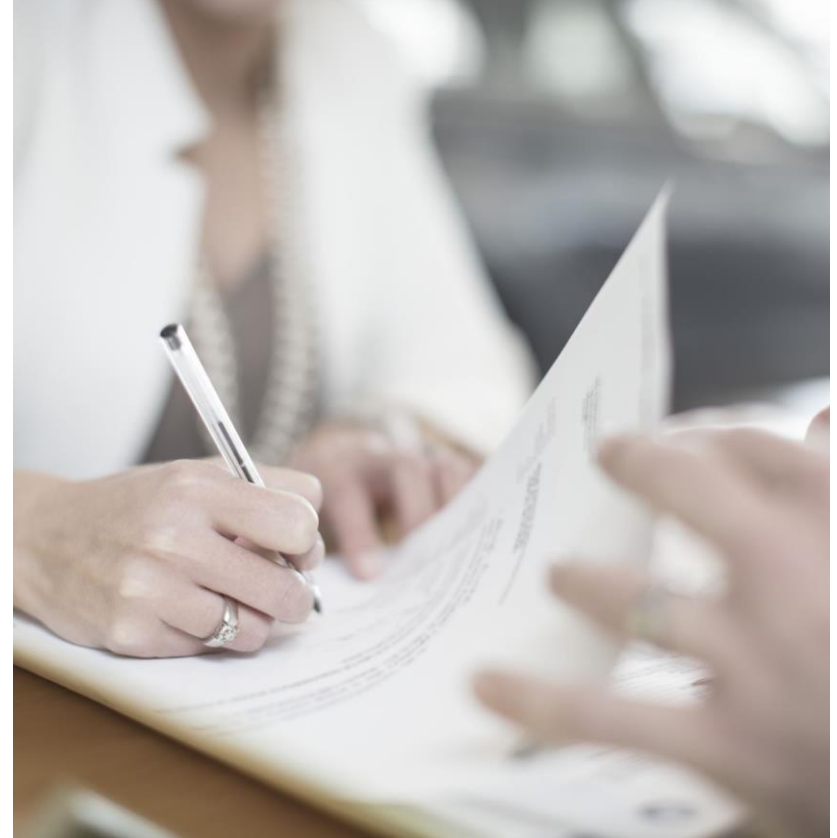
Borough-wide infrastructure grants targeting specific communities and themes.



Advice services to be commissioned separately (see next slide).

# Commissioning of Advice Services

- Advice services will be commissioned directly by Lewisham Council
- This change ensures better integration with other Council services and clearer service specifications
- £600,000 will be allocated from the overall Main Grants budget to fund commissioned advice services



# Reminder - Main Grants budget changes



Reductions have been made to the Main Grants budget for the last several rounds



The Main Grants budget for the years 2011-2014 was approximately £5.9m per annum



Cuts in 2015, 2020, 2025 and agreed cuts to be introduced in 2026 mean the total budget has now reduced to £2,112,308 per annum for the 3-year-long programme



There is no statutory requirement for Local Authorities to offer Main Grants funding, and in some boroughs, they have been completely cut.

# Neighbourhood Grants

Lewisham Main Grants 2026-2029





# How were the neighbourhoods arrived at?

Adult Health and Social Care use Integrated Neighbourhood Teams (INTs) aligned with Primary Care Network-based neighbourhoods.

Children and Young People's Directorate (CYP) services, including Family Hubs and Youth Services also follow a neighbourhood model.

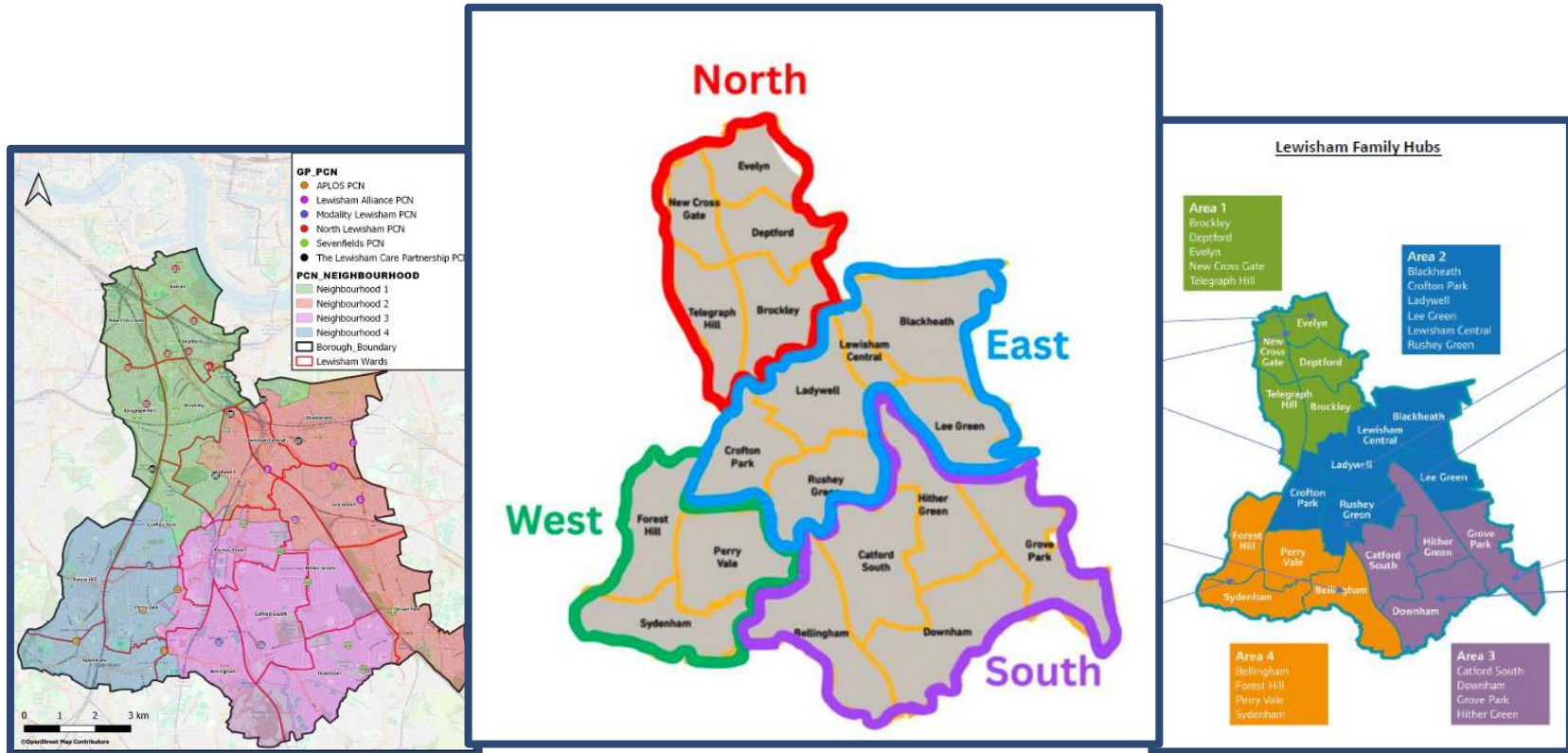
Insights from Local Assemblies and NCIL programmes, which used ward-based clustering also informed the groupings.

The four neighbourhoods are broadly categorised as North, South, East, and West, with minor boundary overlaps.

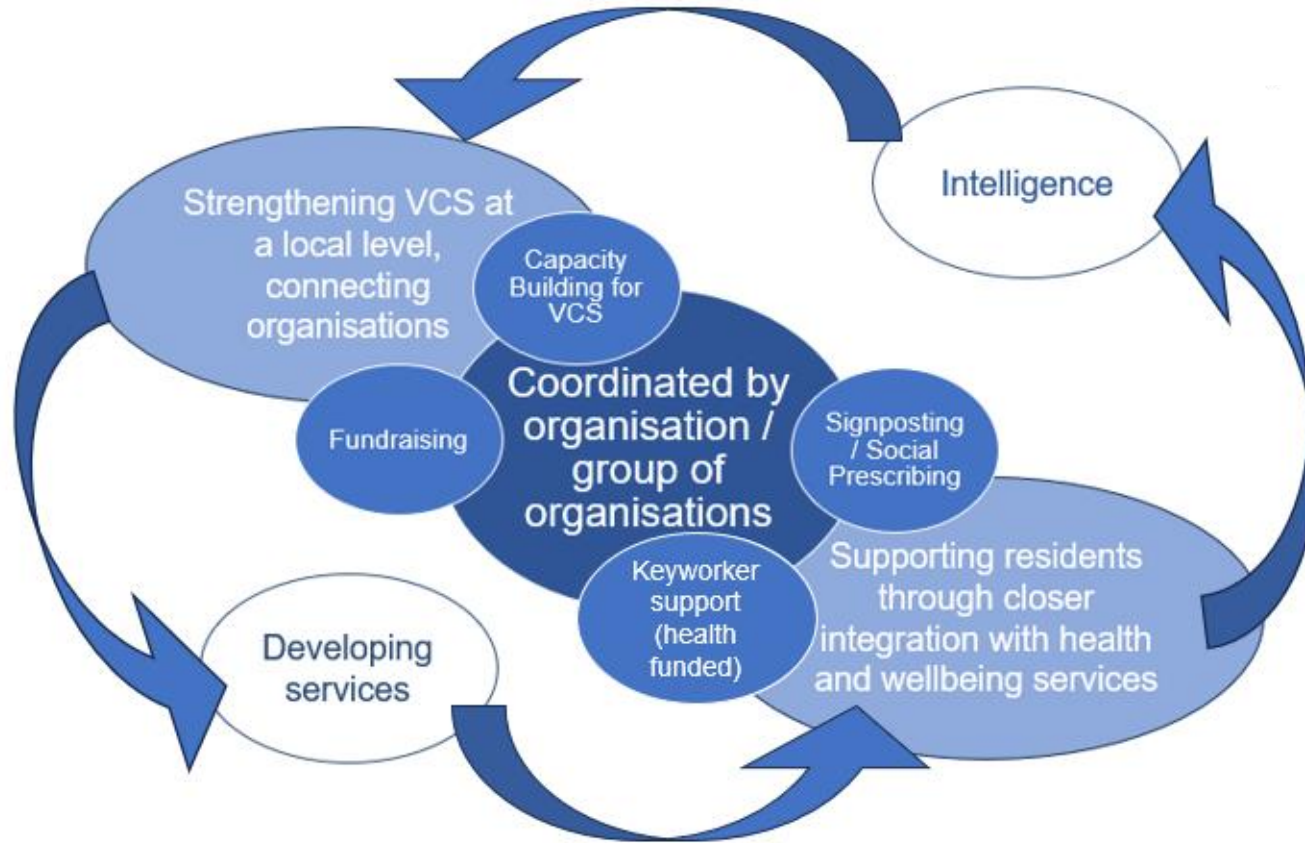
Main Grants monitoring grouped areas with similar demographics and needs e.g. Bellingham is grouped with South (including Downham) due to shared demographics and existing work in place.



# How were the neighbourhoods arrived at?



# How will they work?



# Key Expectations of Neighbourhood Grants

In each neighbourhood we will seek to fund one organisation or a formal partnership with one lead applicant, delivering on a package of Neighbourhood-focused services to:



Providing a service front-door to help residents find the services they need in the community



Identifying unmet needs in your local area and working directly with communities and local organisations to develop services



Fundraising support including direct bid writing for priority services in your neighbourhood



Capacity building for local organisations and groups



Dispersing funds within the neighbourhood



Keyworking with Integrated Neighbourhood Teams to support vulnerable residents to link in to health to the wider VCS

# Funding Amount - Neighbourhoods



A total of £900,000 per annum will be available across the four neighbourhoods over the three-year period to build local infrastructure and ensure services are responsive to community needs.



Some neighbourhoods have a higher level of need – e.g. a higher level of need for support for residents, more gaps in services, more organisations requiring some support to deliver or develop services.



We expect the North and South neighbourhoods to have a higher level of need and as such expect that the model will require more capacity building, networking and development in these neighbourhoods.

# What do we mean by capacity building?



Increase the level of provision in the neighbourhoods



Improve the ability of local groups (e.g. friends of parks groups, Tenant and Resident Associations) to engage more vulnerable residents



Increase ability of residents to start up new initiatives



Develop a mutual support network between all those involved in community activism in the neighbourhood

# What do we mean by dispersing funds?

We will expect organisations to develop a mechanism to disperse funds. These may include:



Ring-fencing a proportion of the Main Grants allocation for the Neighbourhood to be distributed through small grants



Raising funds externally through grant applications or other methods



Distributing funding identified by the council and health partners

# Voice and Representation

**One neighbourhood lead partner can apply for an additional £20k to work at borough-level to ensure:**

- work across the borough-wide and neighbourhood infrastructure services are brought together.
- key issues are fed back through the Stronger Communities Partnership Board and other strategic forums.

**This function should bring together the needs and experience of our VCS through existing and new networks to:**

- actively represent them
- help shape and co-design our policies, strategies and services moving forward



# Neighbourhood 1 – North

## Brockley, Deptford, Evelyn, New Cross Gate, Telegraph Hill

- 170 Community Project
- 2000 Community Action Centre
- 999 Club
- Action for Community Development
- All Saints Community Centre
- Bench Outreach
- Besson Community Gardens
- Blueprint for All
- Bold Vision
- Brockley Society
- Community Advice Works
- Creeside Discovery Centre
- Deptford Challenge Trust
- Deptford Folk
- Deptford Methodist Mission
- Deptford Ragged Trust / Bear Church
- Deptford Reach
- Elevating Success
- Entelechy Arts
- Evelyn 190 Centre
- Evelyn Community Store
- Evelyn Parent's Forum
- Faceworks
- Feed the Hill
- Heart N Soul
- Honor Oak Community Association
- Inspiring Your Imagination
- Irie! Dance Theatre
- Kath's Place
- LEAN
- Leander Community Centre
- Lewington Centre
- Lewisham Foodbank (New Cross)
- Lewisham Multi-lingual Advice Service
- LRMN
- Max Media
- Metro
- Midi Music
- New Cross Learning
- Pepys Community Forum
- Pepys Community Hub
- Red Ribbon Living Well
- Refugee Café
- Second Wave
- SELCE
- Somerville
- St Andrews Church
- St John's Society
- St Peters Church
- Telegraph Hill Centre
- Therapy 4 Healing
- Triangle Arts
- Vietnamese Family Partnership
- Voice 4 Deptford
- Woodpecker Youth Club

# Neighbourhood 2 – East

## Blackheath, Crofton Park, Ladywell, Lee Green, Lewisham Central, Rushey Green

- Access for Living
- Ackroyd Community Centre
- Age Exchange
- Age UK
- Bank of Things
- Catford Fridge
- CC Foundation
- Circle Collective
- Community Connections
- Contact A Family
- Corbett Residents Association
- Crofton Park Community Library
- Deaf Umbrella
- Family N Gage
- Fourth Reserve
- FUSS
- Goodgym
- Grace Aid
- Honor Oak Community Centre
- Kinaraa
- Ladywell Society
- Lee Fare Share
- Lee Forum
- Lee Green Lives
- Lee Manor Society
- Lewisham Donation Hub
- Lewisham Irish Community Centre
- Lewisham Local
- Lewisham Speaking Up
- Lewisham Toy Library
- Lochaber Hall
- LWCC Foodbank
- LYT
- Mammakind
- NTCG Lee – food bank
- Quaggy Development Trust
- REAP Community CIC
- Ringstead Road Community
- Rushey Green Timebank
- Salvation Army foodbank
- St Andrews
- St Mildred's Church
- The Tab
- Therapy 4 Healing
- Wheels for Wellbeing
- Windrush Foundation

# Neighbourhood 3 – South

## Bellingham, Catford South, Downham, Grove Park, Hither Green

- Abbotshall Healthy Lifestyle Centre
- Access Sport
- Action Autism
- AFRIL
- Aging Well in Lewisham
- Bellingham Community Project
- Bellingham Linking Lives
- Brighter Horizons
- Catford Salvation Army
- Chart
- Christ Church United
- CoCo Collective
- Corbett Community Library
- Corbett Residents Assoc
- Culverley Green RA
- Downham Community Centre (Wesley Halls)
- Downham Men's Group
- Downham Mutual Aid
- Downham Nutrition Partnership
- Familia Project
- Fellowship Inn
- Glory Days Community Group
- Goldsmiths Community Centre
- Grove Park Community Group
- Grove Park Youth Club
- Grow Lewisham
- Hither Green Baptist Church
- Hither Green Community Assoc
- Rastafari Movement UK
- Ringway Centre
- Saving Souls Hib
- Sporting recovery Lewisham
- St Dunstan's Church
- St John the Baptist Foodbank
- St Laurence's
- St Luke's and St Mark's
- St Mildred's Church
- St Mungo's Hither Green
- Therapy 4 Healing
- UKCG Soup Kitchen
- WG Grace Community Centre
- Whitefoot and Downham Community Food Project
- World of Life Foodbank

# Neighbourhood 4 – West

## Forest Hill, Perry Vale, Sydenham

- Buddies for All
- Carers Lewisham
- Catbytes
- Forest Hill Community Garden
- Forest Hill Community Library (Calico)
- Forest Hill Society
- Friends of Mayow Park
- James Ross Hunter Youth Support CIC
- Ketra Foodbank
- Lewisham Polish Centre
- Livsey Hall
- LLBC Luncheon Club
- New Shoots
- Oaks and Acorns in Harmony
- Perry Rise Baptist Church - Foodbank
- Platform 1
- Rehoboth Community Outreach Club
- Rockbourne Youth Club
- SEE3
- Stanstead Lodge
- Survivors of Bereavement by Suicide (SOBS)
- Sydenham Arts
- Sydenham Centre
- Sydenham Community Library
- Sydenham Community Project
- Sydenham Community Supermarket
- Sydenham Garden
- The Grove Centre
- TNG
- Venner Road Hall Community Association
- Waythrough
- Young Lewisham Project

# Borough-wide Grants

Lewisham Main Grants 2026-2029



# Purpose of the Borough-wide grants



To work closely with Council and health partners to ensure alignment with corporate and health priorities



To provide voice and representation for communities and VCS services and organisations



To influence the strategic direction of the Council's work



In the case of Arts and Culture, to support Lewisham's Cultural Strategy

# What infrastructure support will be delivered at a borough-wide level?

## Infrastructure and Capacity Building for:

Black-led organisations

Arts and Culture

Digital Inclusion support

Sports

## And for the following Equalities-based areas

Adults with Learning  
Disabilities

Sanctuary Seekers

LGBTQ+ residents



# What do we mean by Capacity Building and Infrastructure Support?

**Organisational  
Development**

**Funding and  
Financial  
Resilience**

**Workforce and  
Volunteer  
Development**

**Policy, Voice,  
and  
Representation**

**Collaboration  
and  
Networking**

**Monitoring,  
Evaluation, and  
Learning**

**Digital and IT  
Support**

**Legal and  
Compliance  
Support**

**Infrastructure  
and Physical  
Resources**

**Emergency  
and Crisis  
Support**

# Funding Amount

## **Infrastructure, capacity building, voice and representation projects:**

- Grants of up to £50k

## **Arts and Culture:**

- One grant of up to £80k to support infrastructure and capacity building
- A small number of grants of up to £30k each to support Lewisham's Cultural Strategy

# Key Expectations – Borough-wide

**Delivering programmes that showcase the strengths of organisations delivering within the cultural and/or voluntary and community sector in Lewisham**

**Organisational advocacy at a local, London-wide or national level**

**Representation of service users and those with lived experience in forums**

**Supporting networking across the sector**

**Sharing good practice to support capacity building within the sectors in Lewisham**

**Supporting strategy development within Lewisham as part of the Stronger Communities Partnership Board**

# Transition Grants

Lewisham Main Grants 2026-2029



# Purpose of Transition Grants and Eligibility Criteria

## Purpose:

- Support front-line organisations during the transition to a new funding model
- Help build resilience and adapt to infrastructure-focused funding
- Recognition that the sector needs a bridging period

## Eligibility:

- Must be funded by Lewisham Main Grant from April 2022 to March 2026.
- Must not be successful in applying for a new Main Grant.
- Must submit a separate application for the transition grant

# Transition Grants – Key Expectations

Approximately 10–15% of Main Grant funding allocated to transition grants (after the funding is removed for Advice Services).

Applicants can apply up to the value of their existing grants and are encouraged to request less to support more organisations.

Build	Build the financial resilience of front-line services over the grant period
Support	Support the development of the new model
Share	Share expertise with other funded projects

# Making your application

Main Grants 2026-2029



The image shows a hand holding a tablet displaying a digital application form. The form is titled 'APPLICATION FORM' in large, bold, black capital letters. Below the title is a section header 'PERSONAL INFORMATION' in bold, black capital letters. The form contains several input fields for personal data:

PERSONAL INFORMATION		
Last Name	First Name	Middle
Address	City	State
Phone	Email address	



# Eligibility Criteria

Organisations must be:

Not-for-profit

Serving Lewisham residents

Properly constituted

Established organisations or  
groups (no less than 12  
months old)

## Neighbourhood:

Collaborative or partnership  
applications are encouraged,  
with one organisation holding  
the funds

Applications cannot exceed  
50% of last full year's  
recorded turnover

## Borough-wide:

Represent one of the areas  
of focus

Applications cannot  
exceed 50% of last full  
year's recorded turnover

## Transition:

Be currently funded by  
Lewisham's Main Grants  
programme

# What will we be asking you?

## All applications

Overview and eligibility questions – what is your organisation and what you do?

Equality and accessibility questions – who do you aim to reach and how?

Financial questions – what is the budget for the project and do you have any other funding?

Expectations and values questions – Grant Agreement, mobilisation, monitoring and data collection / sharing

Organisation specific questions – Lead contact, previous grants received, policies

# What will we be asking you?

## Neighbourhood applications

Which area you want to apply for

Whether you are part of a partnership or a single organisation

Your connection to the neighbourhood

Your understanding of needs in the neighbourhood

Your approach, track record and experience

Project specific questions – what will you deliver and how?

# What will we be asking you?

## Borough-wide applications

Which area of focus you want to apply for

Whether you are part of a partnership or a single organisation

Your understanding of needs in the sector

Your approach, track record and experience in the area

Project specific questions – what will you deliver and how?

# What will we be asking you?

## Transition applications

How you've benefitted from previous Main Grants funding

How you plan to use the grant

How you will work with the wider sector

Your approach going forward

**Applicants can bid for funding up to the value of their existing grants, however we encourage applicants to consider requesting less than their current amount to enable us to support more of our grant-funded organisations**

# Resources

Lewisham Main Grants 2026-2029



# Monitoring Officers

Your first port of call for support should be your Monitoring Officer:

**Katie Drew** – [katie.drew1@lewisham.gov.uk](mailto:katie.drew1@lewisham.gov.uk)

**North:** Brockley, Deptford, Evelyn, New Cross Gate, Telegraph Hill

**Lucy Formolli** – [lucy.formolli@lewisham.gov.uk](mailto:lucy.formolli@lewisham.gov.uk)

**South:** Bellingham, Downham, Grove Park, Hither Green, Catford South

**Sarah Lang** – [sarah.lang@lewisham.gov.uk](mailto:sarah.lang@lewisham.gov.uk)

**East:** Blackheath, Crofton Park, Ladywell, Lee Green, Lewisham Central, Rushey Green

**Paul Gale** – [paul.gale@lewisham.gov.uk](mailto:paul.gale@lewisham.gov.uk)

**West:** Forest Hill, Perry Vale, Sydenham (and Positive Aging Council)

**Sara Wickert** – [sara.wickert@lewisham.gov.uk](mailto:sara.wickert@lewisham.gov.uk)

**Cross-ward support**





# What additional support is available?

A wide range of resources to support you in making your application can be found at

[Lewisham's Grant Support Hub](#)



**We will share:**



Slides from this meeting



FAQs on the Community Funding Website



**You can also contact:**



Your Monitoring Officer

If your request is urgent and you can't reach your Monitoring Officer, please email – [main.grants@lewisham.gov.uk](mailto:main.grants@lewisham.gov.uk) (including support with IT issues)

# What additional support is available?



Contact us if you would like to talk through your proposed approach before applying – [main.grants@lewisham.gov.uk](mailto:main.grants@lewisham.gov.uk)

We cannot lead conversations about potential ways of working, and possible partnerships, but we will make space available at our online sessions for this purpose.



**We are also hosting networking sessions in each area in early September:**

- 1.North neighbourhood** - Wednesday 3 September, The Albany, 2-4pm
- 2.East neighbourhood** - Thursday 4 September, Civic Suite Catford, 2-4pm
- 3.South neighbourhood** - Tuesday 9 September, Downham Library, 11am-1pm
- 4.West neighbourhood** - Wednesday 10 September, Forest Hill Library, 11am-1pm

# Any Questions?

Eligibility?

Possible  
Neighbourhood  
Models?

Approach?

Networking?

Monitoring and  
timelines?

Project  
delivery?